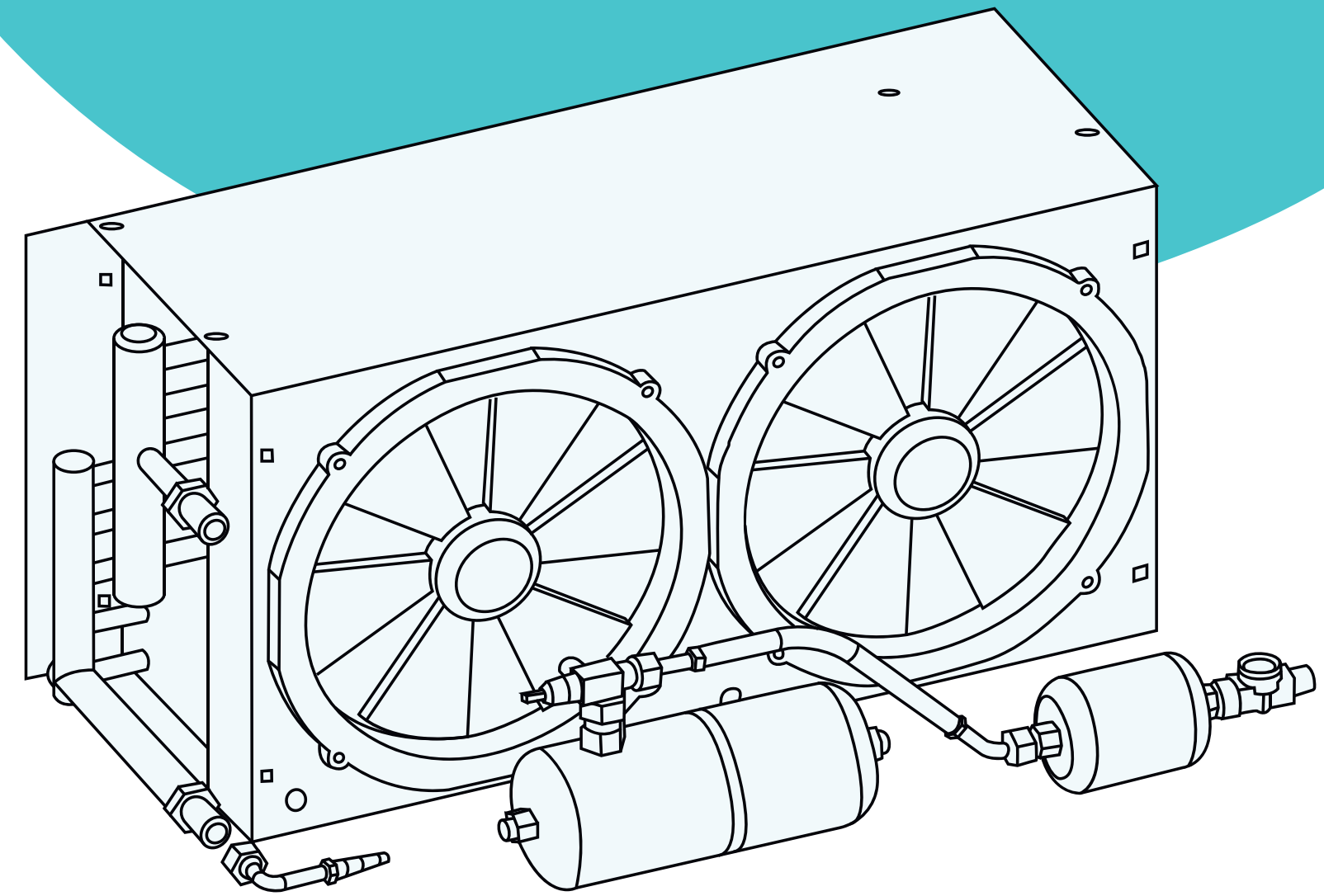


THERMOBUS[®]
**Sistemi
Integrati**
Integrated Systems



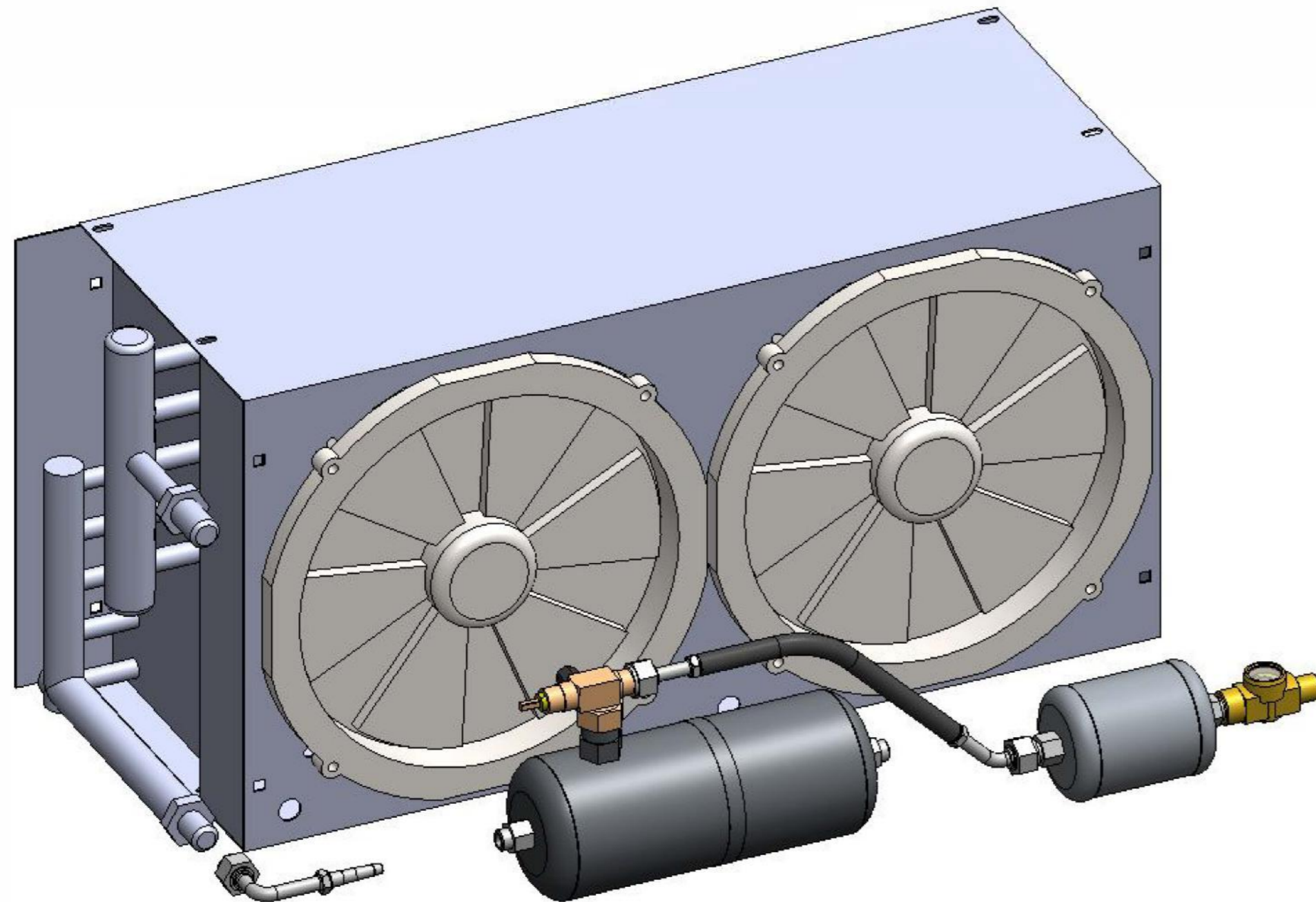
Optimized COP for a longer range!

THERMOBUS®

Condensatori Integrati

Integrated Condensers

TH-C17



SPECIFICHE TECNICHE / TECHNICAL SPECS

| | | |
|---|-------------------|---------------|
| Capacità di raffreddamento / Cooling capacity | kW | 17 |
| Portata d'aria / Air capacity | m ³ /h | 4800 |
| Corrente assorbita / Power consumption | A | 22 |
| Voltaggio / Operating voltage | VDC | 24 |
| Peso / Weight | Kg | 20 |
| Refrigerante / Cooler | - | R134a/R1234yf |

DIMENSIONI / DIMENSIONS (L/W/H): 749 mm / 285 mm / 361 mm

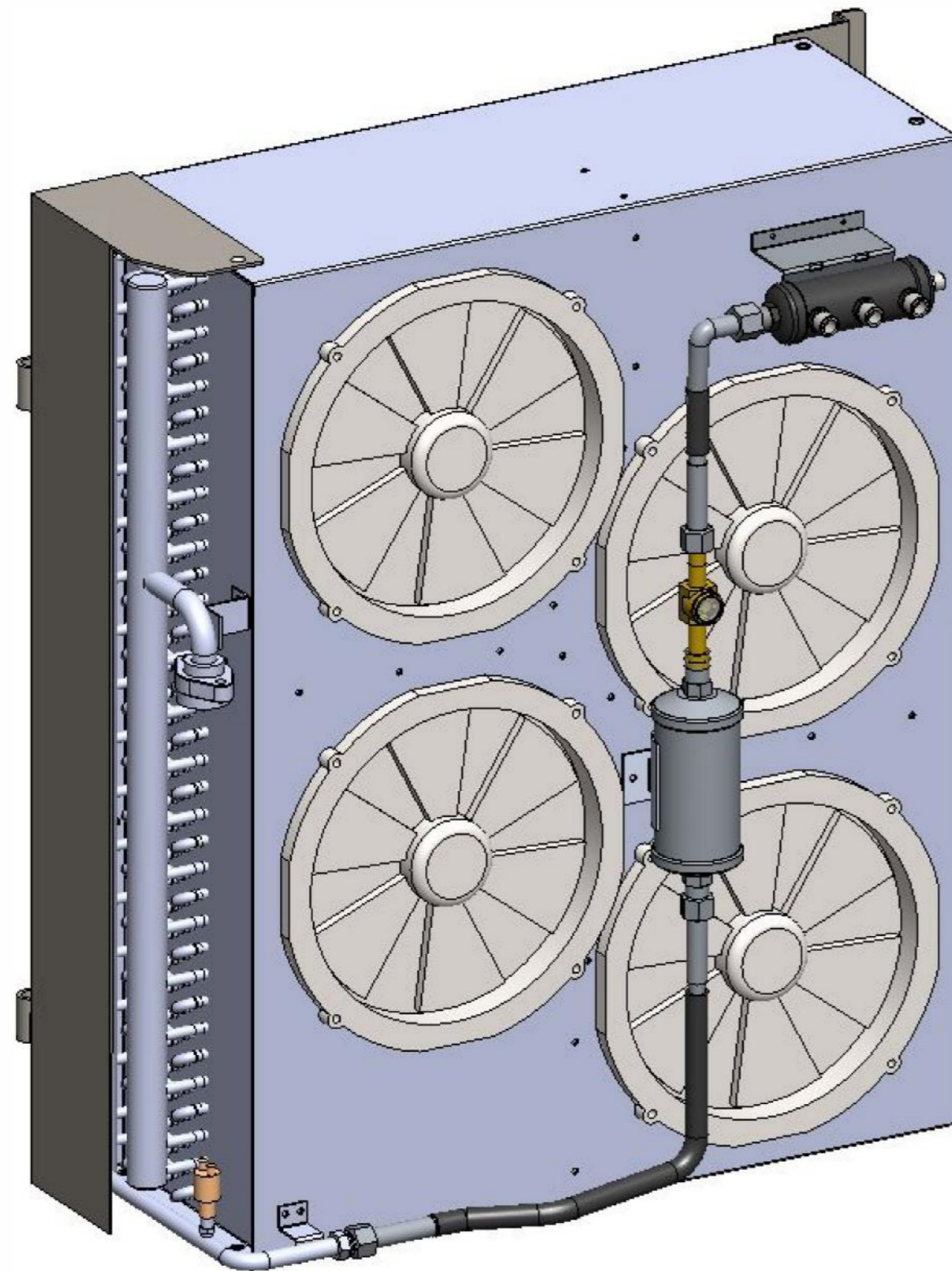
Optimized COP for a longer range!

THERMOBUS[®]

Condensatori Integrati

Integrated Condensers

TH-C30



SPECIFICHE TECNICHE / TECHNICAL SPECS

| | | |
|---|-------------------|---------------|
| Capacità di raffreddamento / Cooling capacity | kW | 30 |
| Portata d'aria / Air capacity | m ³ /h | 8200 |
| Corrente assorbita / Power consumption | A | 48 |
| Voltaggio / Operating voltage | VDC | 24 |
| Peso / Weight | Kg | 80 |
| Refrigerante / Cooler | - | R134a/R1234yf |

DIMENSIONI / DIMENSIONS (L/W/H): 841 mm / 422 mm / 925 mm

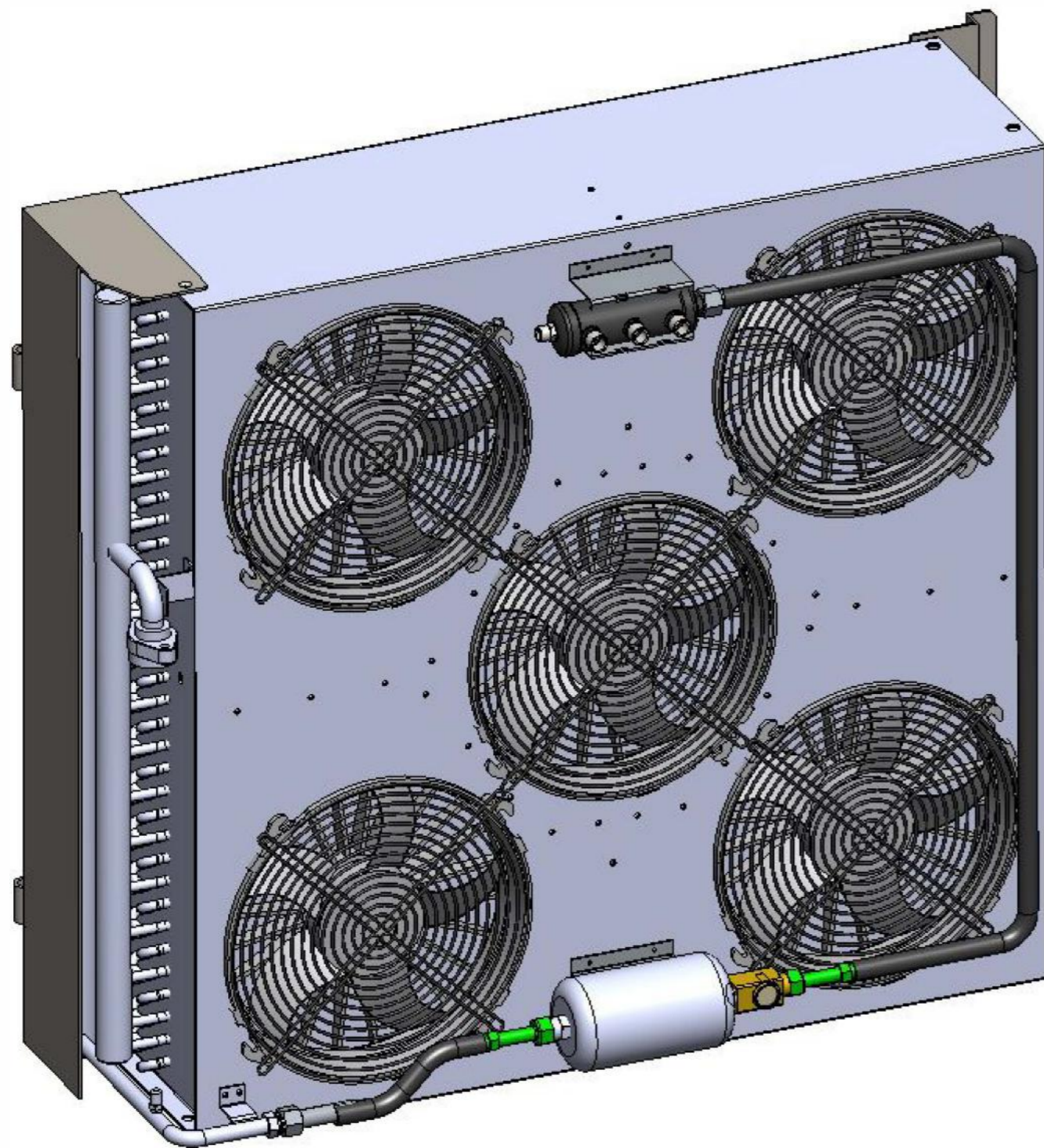
Optimized COP for a longer range!

THERMOBUS®

Condensatori Integrati

Integrated Condensers

TH-C39



SPECIFICHE TECNICHE / TECHNICAL SPECS

| | | |
|---|-------------------|---------------|
| Capacità di raffreddamento / Cooling capacity | kW | 39 |
| Portata d'aria / Air capacity | m ³ /h | 11000 |
| Corrente assorbita / Power consumption | A | 48 |
| Voltaggio / Operating voltage | VDC | 24 |
| Peso / Weight | Kg | 80 |
| Refrigerante / Cooler | - | R134a/R1234yf |

DIMENSIONI / DIMENSIONS (L/W/H): 1061 mm / 390 mm / 930 mm

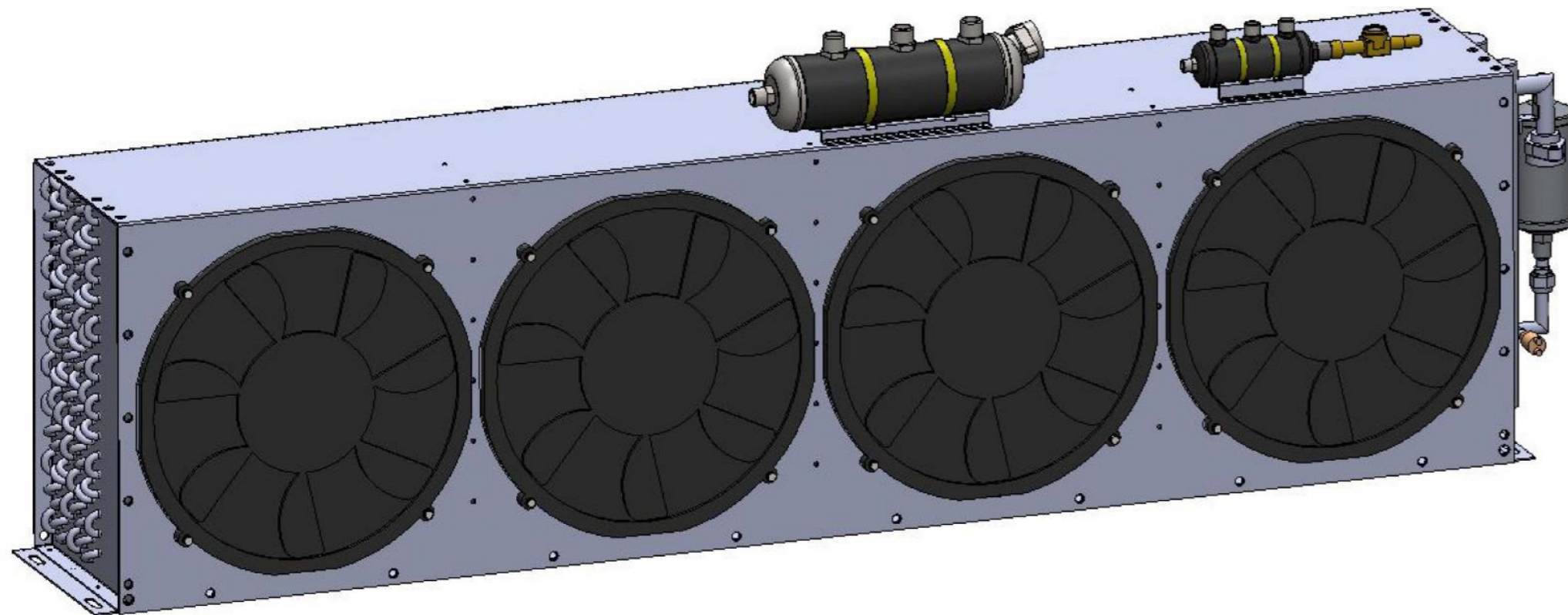
Optimized COP for a longer range!

THERMOBUS[®]

Condensatori Integrati

Integrated Condensers

TH-C40



SPECIFICHE TECNICHE / TECHNICAL SPECS

| | | |
|---|-------------------|---------------|
| Capacità di raffreddamento / Cooling capacity | kW | 40 |
| Portata d'aria / Air capacity | m ³ /h | 11200 |
| Corrente assorbita / Power consumption | A | 48 |
| Voltaggio / Operating voltage | VDC | 24 |
| Peso / Weight | Kg | 110 |
| Refrigerante / Cooler | - | R134a/R1234yf |

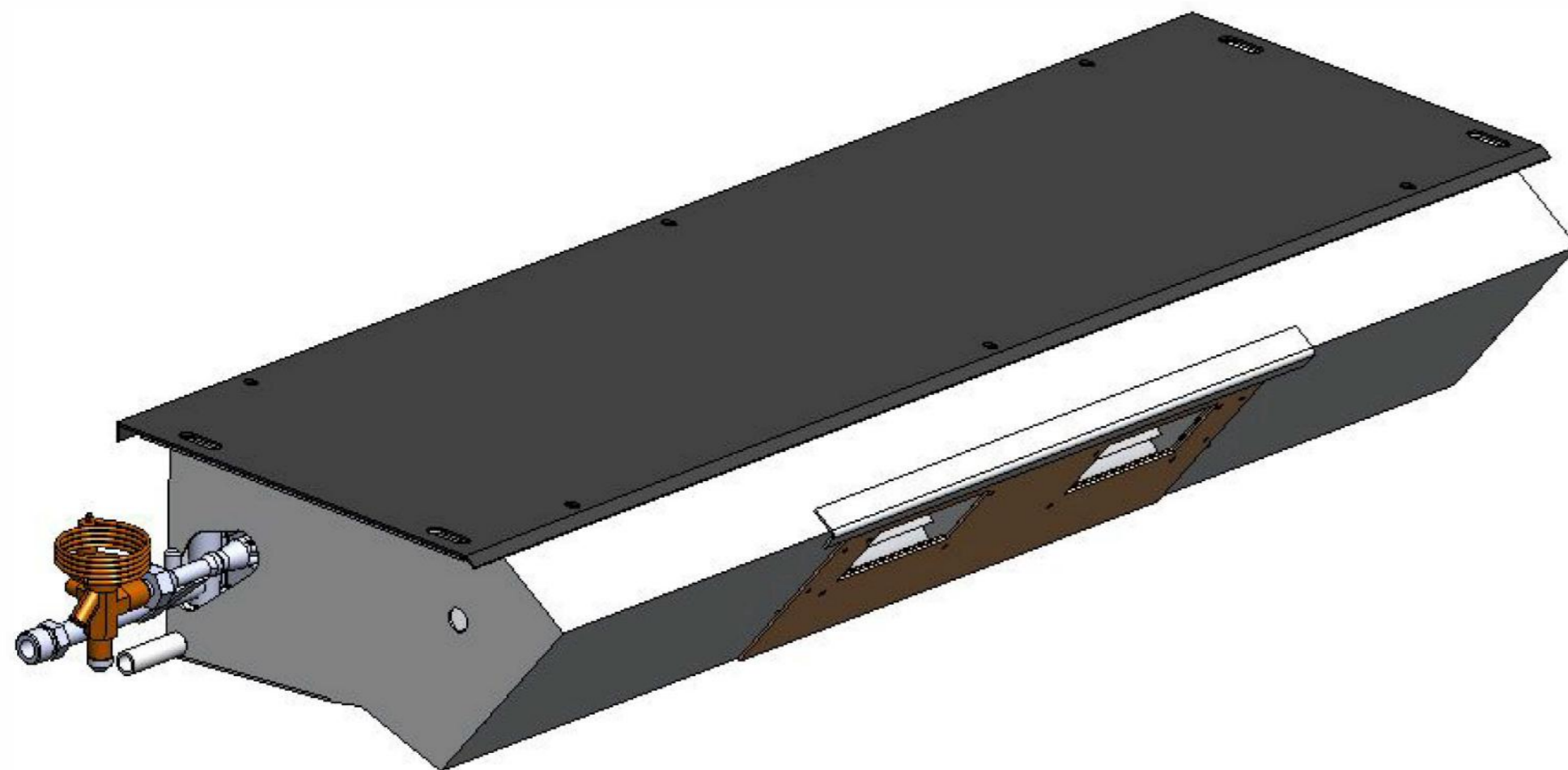
DIMENSIONI / DIMENSIONS (L/W/H): 2010 mm / 324 mm / 500 mm

Optimized COP for a longer range!

THERMOBUS®

Evaporatori Integrati Integrated Evaporators

TH-E6



SPECIFICHE TECNICHE / TECHNICAL SPECS

| | | |
|---|-------------------|---------------|
| Capacità di raffreddamento / Cooling capacity | kW | 6 |
| Capacità di riscaldamento / Heating capacity | kW | 8 |
| Portata d'aria / Air capacity | m ³ /h | 1000 |
| Corrente assorbita / Power consumption | A | 12 |
| Voltaggio / Operating voltage | VDC | 24 |
| Peso / Weight | Kg | 13 |
| Refrigerante / Cooler | - | R134a/R1234yf |

DIMENSIONI / DIMENSIONS (L/W/H): 1192 mm / 382 mm / 178 mm

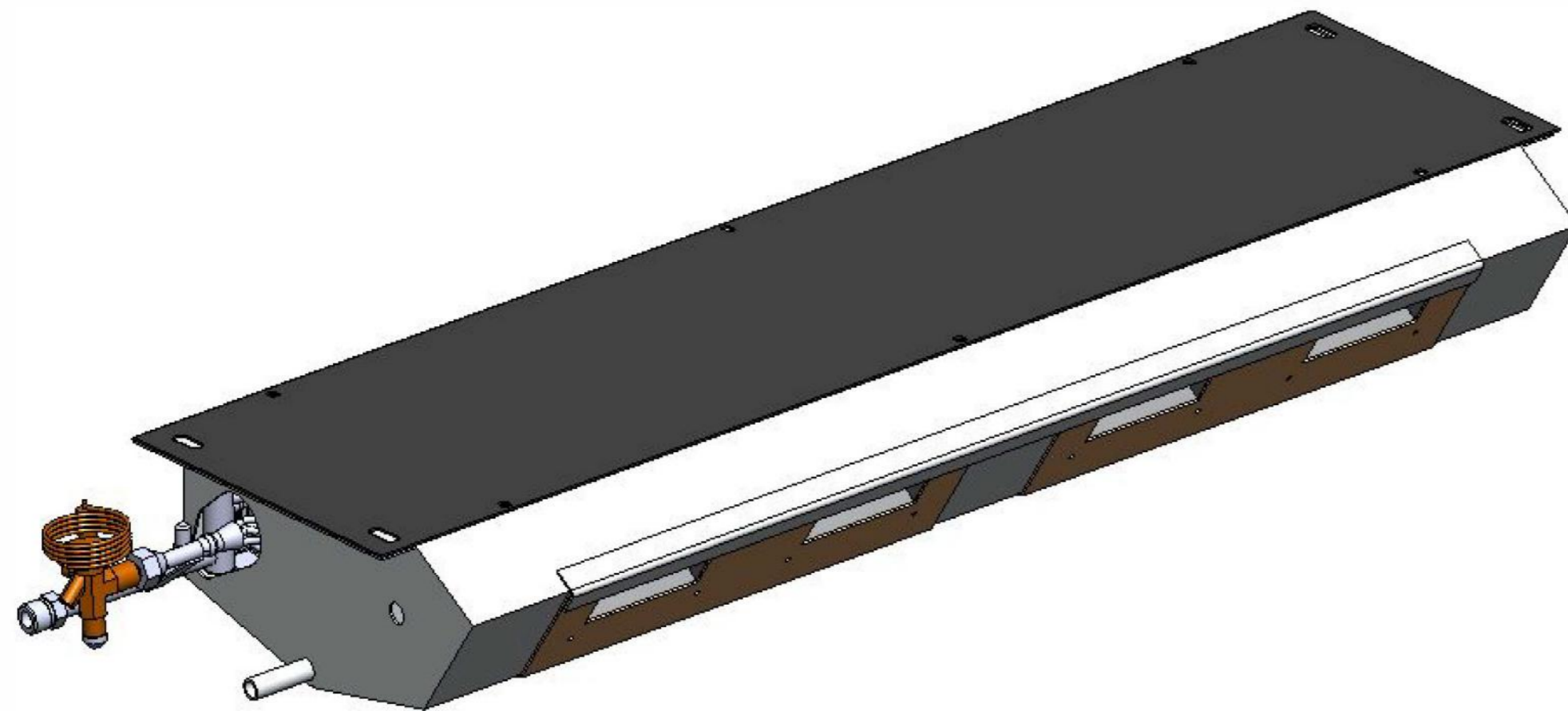
Optimized COP for a longer range!

THERMOBUS®

Evaporatori Integrati

Integrated Evaporators

TH-E7



SPECIFICHE TECNICHE / TECHNICAL SPECS

| | | |
|---|-------------------|---------------|
| Capacità di raffreddamento / Cooling capacity | kW | 7 |
| Capacità di riscaldamento / Heating capacity | kW | 9 |
| Portata d'aria / Air capacity | m ³ /h | 1300 |
| Corrente assorbita / Power consumption | A | 24 |
| Voltaggio / Operating voltage | VDC | 24 |
| Peso / Weight | Kg | 13 |
| Refrigerante / Cooler | - | R134a/R1234yf |

DIMENSIONI / DIMENSIONS (L/W/H): 1182 mm / 382 mm / 158 mm

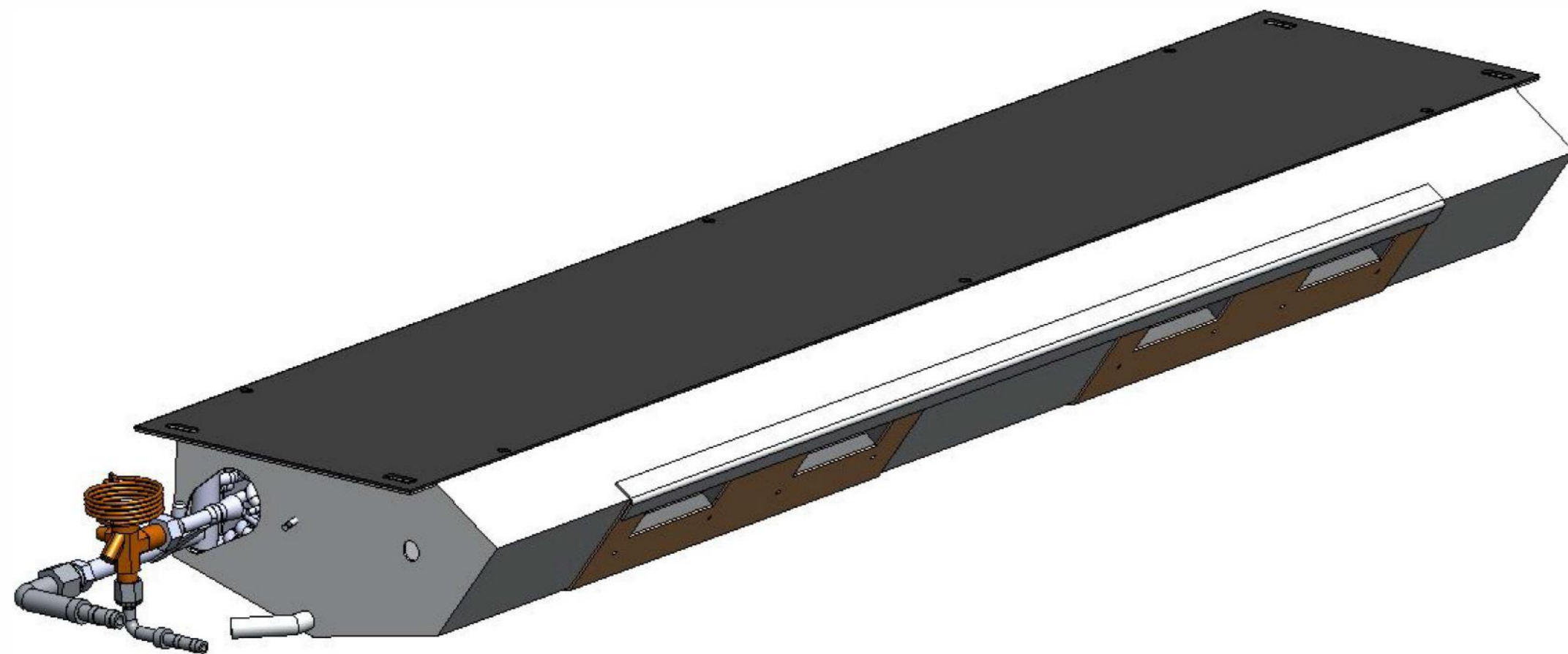
Optimized COP for a longer range!

THERMOBUS®

Evaporatori Integrati

Integrated Evaporators

TH-E8A



SPECIFICHE TECNICHE / TECHNICAL SPECS

| | | |
|---|-------------------|---------------|
| Capacità di raffreddamento / Cooling capacity | kW | 8 |
| Capacità di riscaldamento / Heating capacity | kW | 10 |
| Portata d'aria / Air capacity | m ³ /h | 1300 |
| Corrente assorbita / Power consumption | A | 15 |
| Voltaggio / Operating voltage | VDC | 24 |
| Peso / Weight | Kg | 24 |
| Refrigerante / Cooler | - | R134a/R1234yf |

DIMENSIONI / DIMENSIONS (L/W/H): 1485 mm / 382 mm / 158 mm

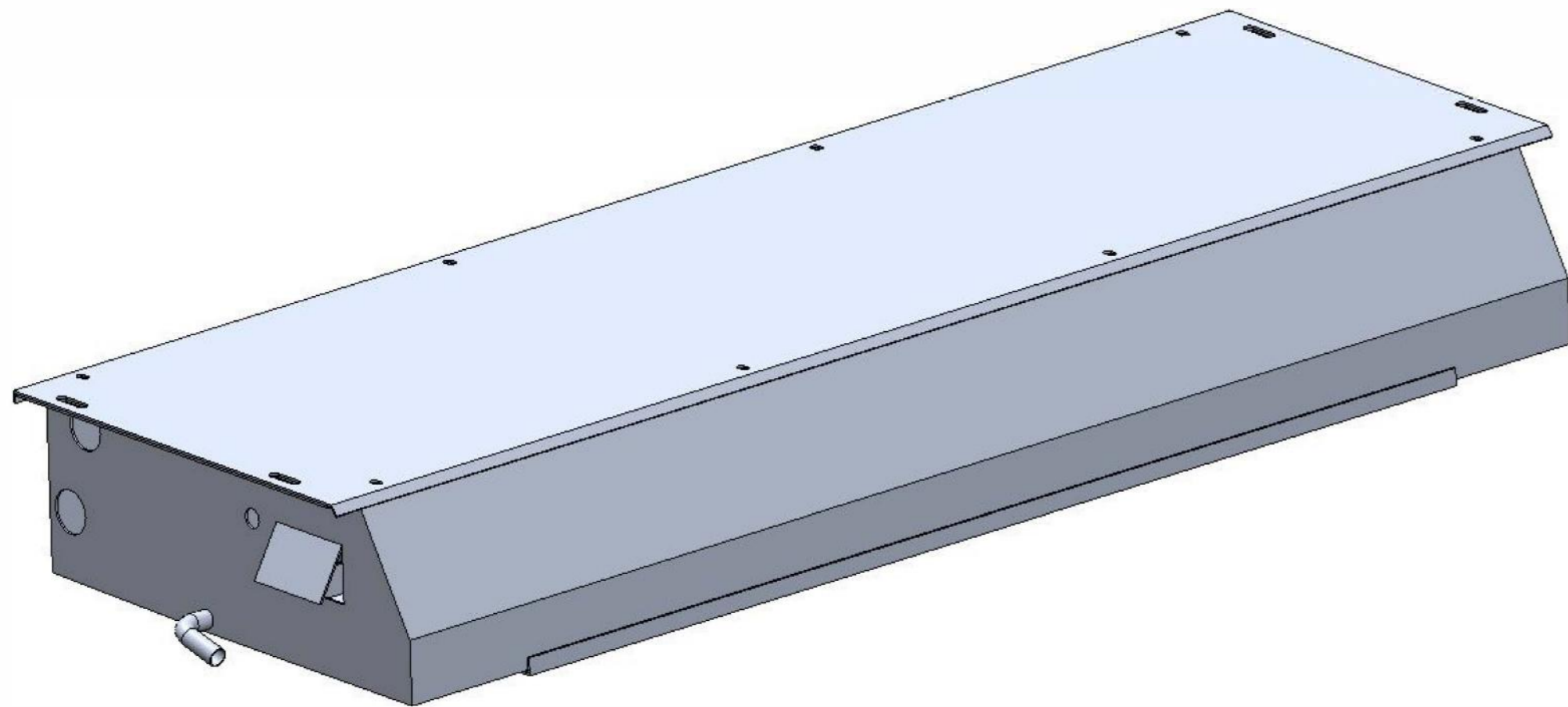
Optimized COP for a longer range!

THERMOBUS®

Evaporatori Integrati

Integrated Evaporators

TH-E8B



SPECIFICHE TECNICHE / TECHNICAL SPECS

| | | |
|---|-------------------|---------------|
| Capacità di raffreddamento / Cooling capacity | kW | 8 |
| Capacità di riscaldamento / Heating capacity | kW | 10 |
| Portata d'aria / Air capacity | m ³ /h | 1800 |
| Corrente assorbita / Power consumption | A | 24 |
| Voltaggio / Operating voltage | VDC | 24 |
| Peso / Weight | Kg | 18 |
| Refrigerante / Cooler | - | R134a/R1234yf |

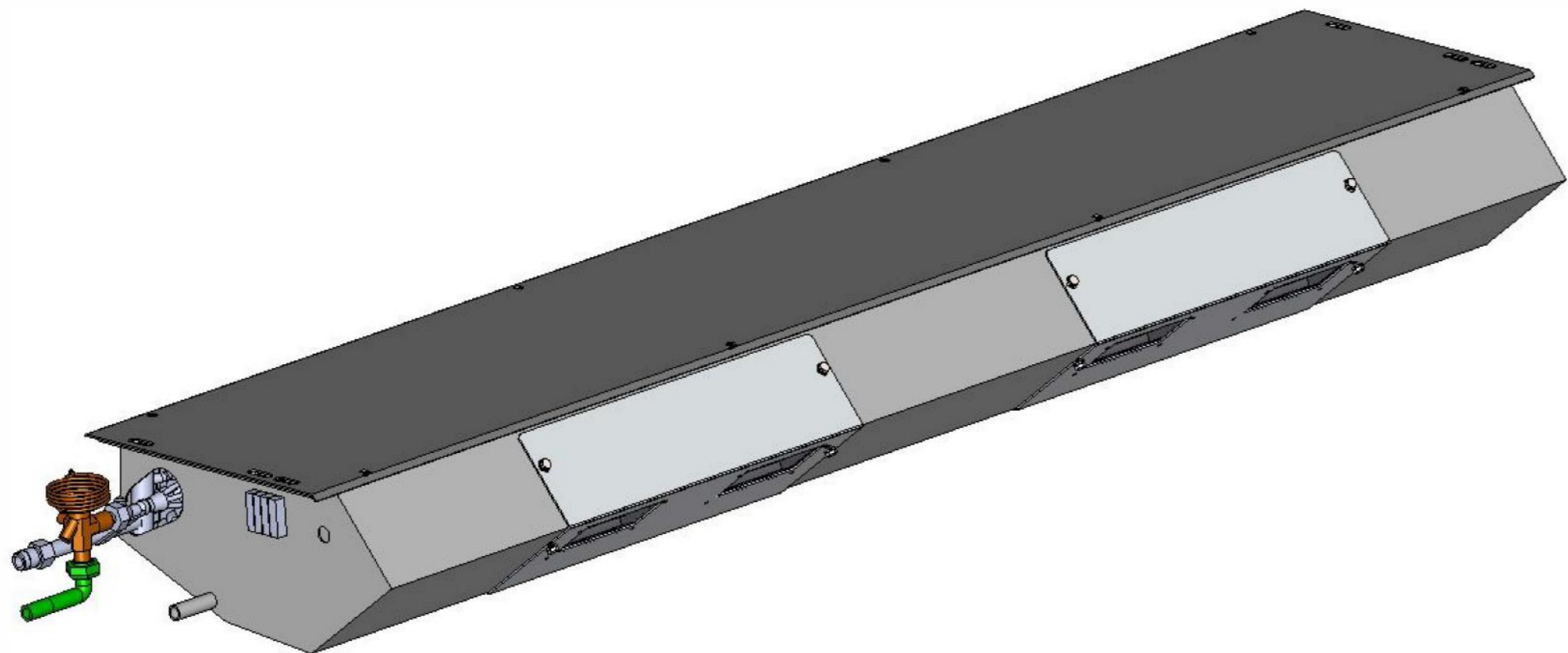
DIMENSIONI / DIMENSIONS (L/W/H): 1260 mm / 446 mm / 167 mm

Optimized COP for a longer range!

THERMOBUS®

Evaporatori Integrati Integrated Evaporators

TH-E11A



SPECIFICHE TECNICHE / TECHNICAL SPECS

| | | |
|---|-------------------|---------------|
| Capacità di raffreddamento / Cooling capacity | kW | 11 |
| Capacità di riscaldamento / Heating capacity | kW | 12 |
| Portata d'aria / Air capacity | m ³ /h | 2300 |
| Corrente assorbita / Power consumption | A | 24 |
| Voltaggio / Operating voltage | VDC | 24 |
| Peso / Weight | Kg | 25 |
| Refrigerante / Cooler | - | R134a/R1234yf |

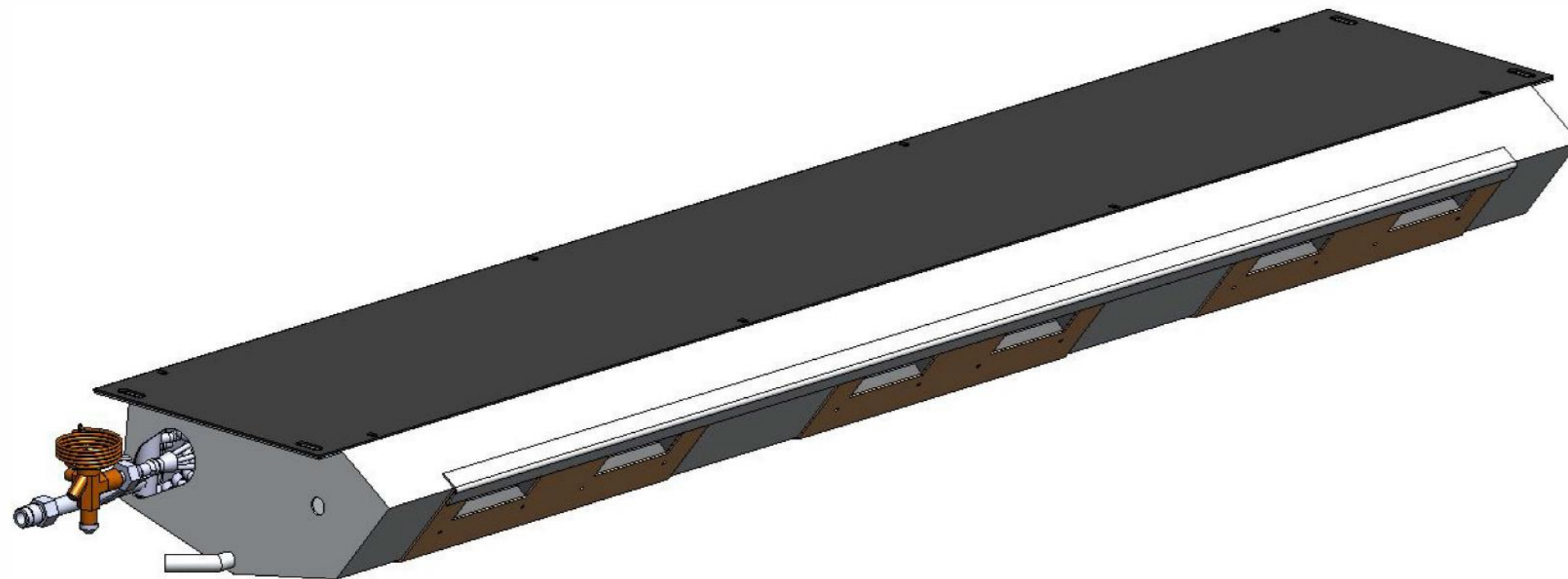
DIMENSIONI / DIMENSIONS (L/W/H): 1810 mm / 414 mm / 187 mm

Optimized COP for a longer range!

THERMOBUS®

Evaporatori Integrati Integrated Evaporators

TH-E11B



SPECIFICHE TECNICHE / TECHNICAL SPECS

| | | |
|---|-------------------|---------------|
| Capacità di raffreddamento / Cooling capacity | kW | 11 |
| Capacità di riscaldamento / Heating capacity | kW | 12 |
| Portata d'aria / Air capacity | m ³ /h | 2100 |
| Corrente assorbita / Power consumption | A | 24 |
| Voltaggio / Operating voltage | VDC | 24 |
| Peso / Weight | Kg | 24 |
| Refrigerante / Cooler | - | R134a/R1234yf |

DIMENSIONI / DIMENSIONS (L/W/H): 1815 mm / 382 mm / 158 mm



THERMOBUS[®]

Since 1975, we develop
customised HVAC
solutions for buses,
minibuses and special
vehicles.

Contact Us!

🌐 **Web:** www.thermobus.it

✉ **E-mail:** info@thermobus.it

📞 **Office tel.:** +39 035 4997266

Thermobus s.r.l.

Via Milano n. 2 - 24040 Bonate Sopra (BG) – C.F. e P.IVA 04451660155